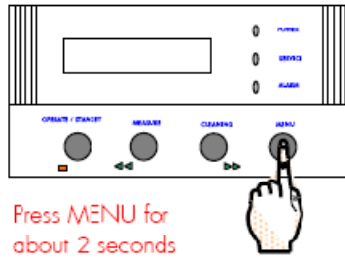


# To dispense a set volume between 0.25 L and 63.75 L

- Press MENU for about 2 seconds. The LCD should change as shown below.

PRE OPERATE

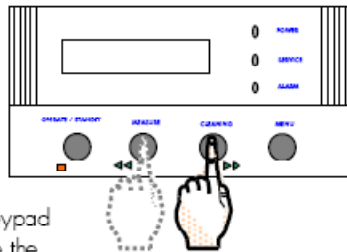


PRESET VOLUME  
0.25 l

Press MENU for  
about 2 seconds

- Use the Keypad Arrow Keys (MEASURE or CLEANING) to set the volume of water you want to dispense from the Milli-Q.

18.2 M $\Omega$  . cm @ 25 ° C  
TOC: 4 ppb



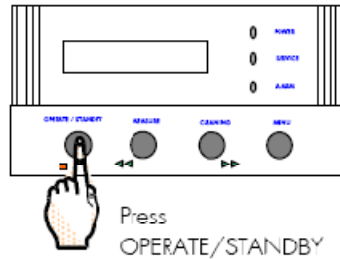
PRESET VOLUME  
6.50 l

*6.50 L is the desired  
volume to be dispensed.*

Use the Arrow Keypad  
Buttons to change the  
PRE-SET VOLUME value

- Hold the OPERATE/STANDBY Keypad Button to 'validate' your volume selection. The Milli-Q will now go to PRE OPERATE Mode.

PRESET VOLUME  
6.50 l



PRE OPERATE

Press  
OPERATE/STANDBY

- Move the FOU Dispenser Trigger forward. The Milli-Q will go from PRE OPERATE Mode to PRODUCT Mode. The LCD will show (lower right corner) the amount of water being dispensed.

PRE OPERATE



18.2 M $\Omega$  . cm @ 25 ° C  
TOC: 4 ppb 0.02 l

A counter shows the total volume being  
dispensed (0.02 Litres at this time).